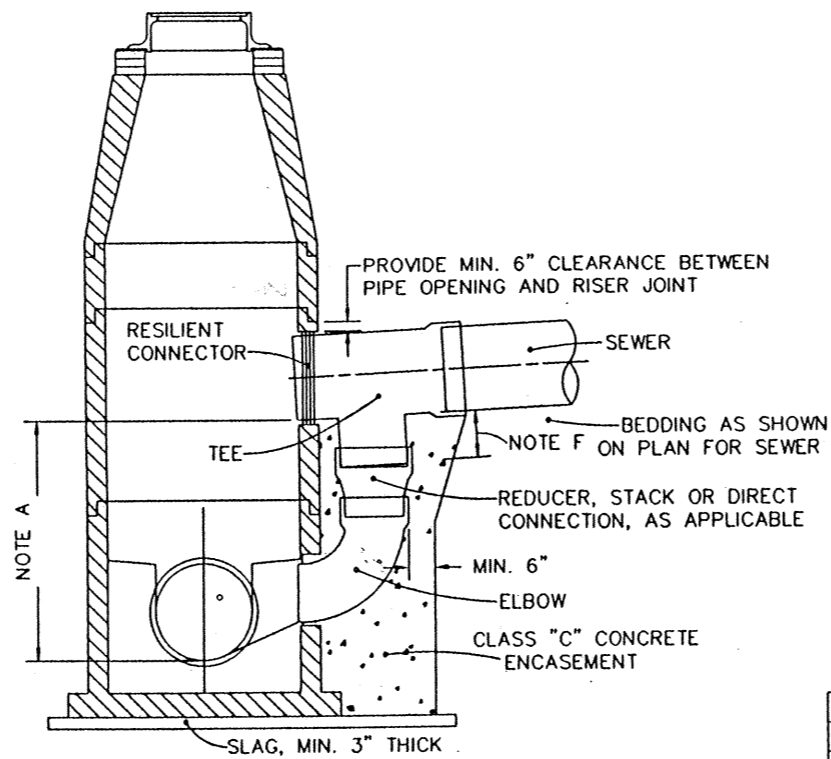


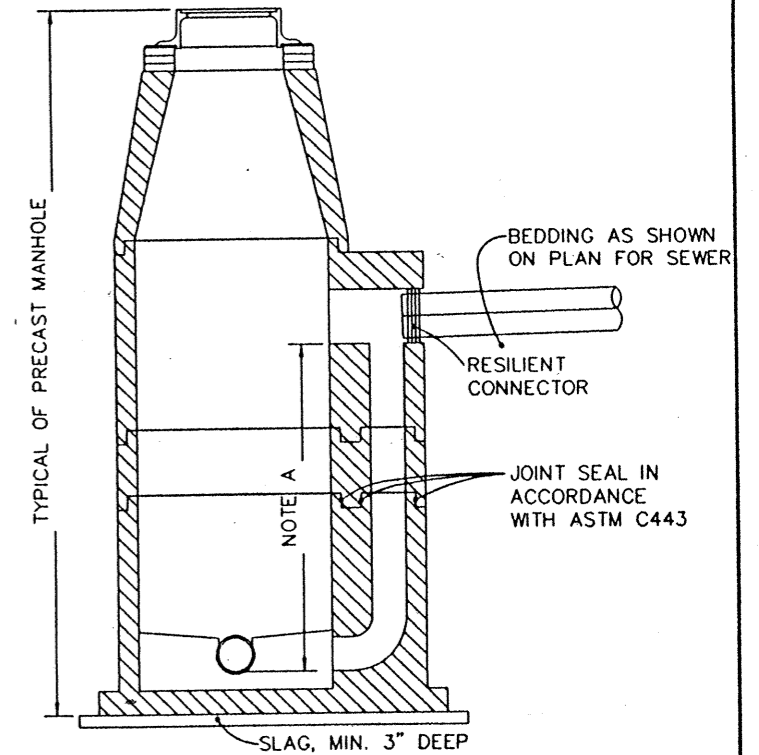
TYPICAL DROP MANHOLE  
TYPICAL Y-INTERSECTION



TYPICAL PRECAST DROP MANHOLE

- A. A DROP MANHOLE SHOULD BE DESIGNED WHEN THE ELEVATION DIFFERENCE BETWEEN THE TWO INVERTS IS MORE THAN 24".
- B. IN MANHOLES 1A, 2A & 5A THE ELBOW SHALL BE PLACED CROWN TO CROWN WITH THE MAIN SEWER PIPE. IN ALL OTHER MANHOLES THE ELBOW SHALL BE PLACED WITH THE INVERT AT THE SPRING LINE OF THE MAIN SEWER PIPE.
- C. OPENINGS IN BASE & RISER SECTIONS SHALL BE PROVIDED WHEN THE UNITS ARE CAST TO MEET THE PROJECT REQUIREMENTS.
- D. THE TEE MUST BE PLACED OR TRIMMED SO IT DOES NOT PROJECT INTO THE MANHOLE.
- E. ATTACH APPROVED CORROSION RESISTANT STRAPS INTO MANHOLE WALL, SPACED SUFFICIENTLY TO SECURE STACK, PRIOR TO PLACING ENCASEMENT.
- F. WHEN USING ABS OR PVC PIPE, CONCRETE ENCASEMENT MUST BE STOPPED 12" BELOW MAIN SEWER PIPE.

RECOMMENDED INSTALLATION				
SEWER	TEE	REDUCER	STACK	ELBOW
8"	8" X 8"		8"	8"
10"	10" X 10"		10"	10"
12"	12" X 12"		12"	12"
15"	15" X 12"		12"	12"
18"	18" X 15"	15" X 12"	12"	12"
21"	21" X 15"	15" X 12"	12"	12"
24"	24" X 15"	15" X 12"	12"	12"
27"	27" X 18"	18" X 15"	15"	15"

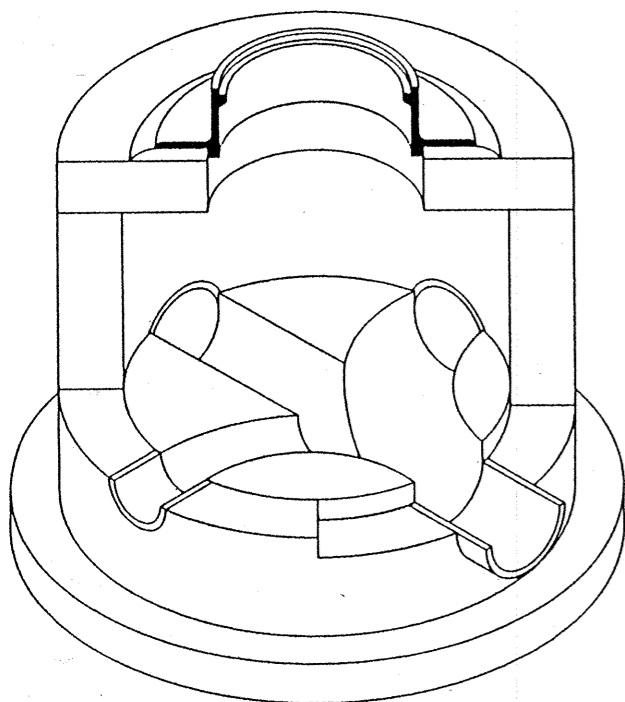


PRECAST MANHOLE WITH INTEGRAL DROP

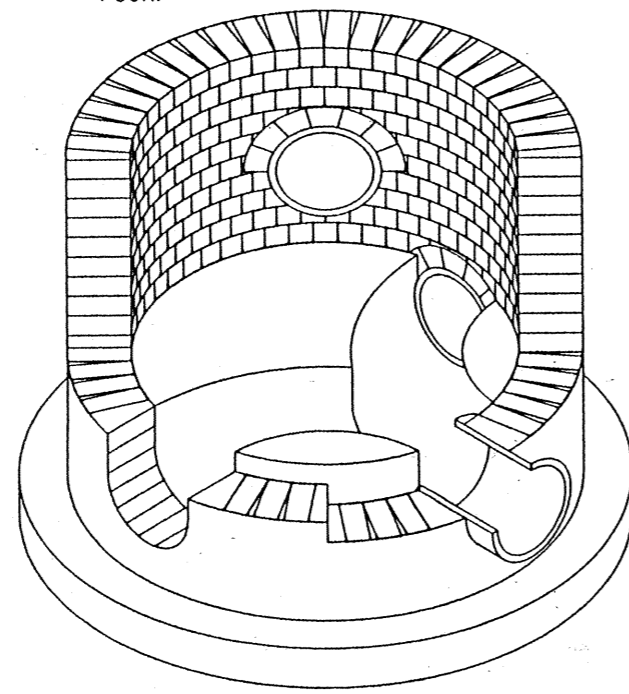
THE CHANNEL & BENCH IN STORM PRECAST MANHOLES MAY BE CLASS "C" CONCRETE IN PLACE OF BRICK, AND IT MUST BE PLACED & FINISHED COMPLETE IN ONE POUR.

CHANNEL FOR 8", 10" & 12" SEWER SHALL BE WIDENED AS SHOWN TO PROVIDE BUCKET & CAMERA CLEARANCE.

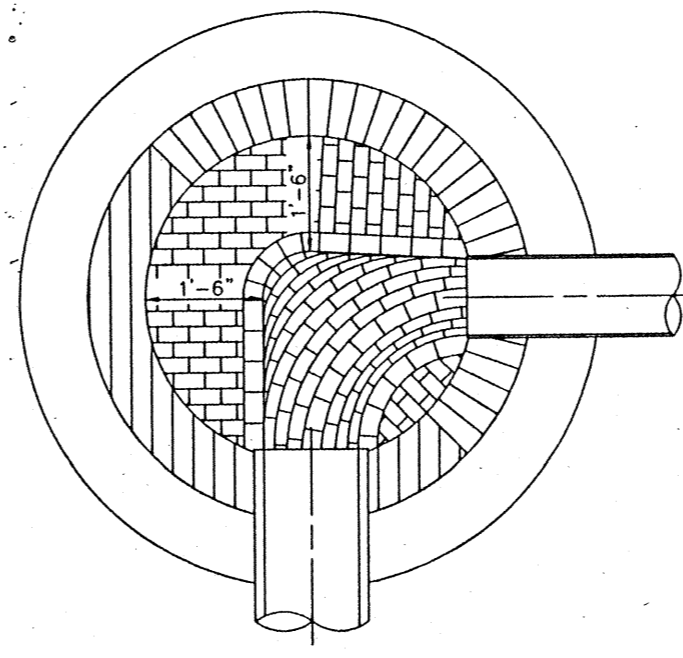
SEE MH-1 FOR TYPICAL BRICK MANHOLE.  
SEE MH-2 FOR TYPICAL PRECAST MANHOLE.  
SEE MH-3, MH-4, MH-5 FOR TYPICAL PIPE MANHOLE.  
SEE MH-6 FOR TYPICAL MANHOLE/PIPE CONNECTIONS AND TYPICAL SLAB TOP.



TYPICAL SLAB TOP MANHOLE  
TYPICAL X-INTERSECTION



TYPICAL INLET CONNECTION  
TYPICAL T-INTERSECTION



TYPICAL L-INTERSECTION

DO NOT SCALE - USE DIMENSIONS ONLY

CITY OF AKRON  
BUREAU OF ENGINEERING

CONSTRUCTION  
STANDARD DWG. No.

MH-9

*David Felik* 4-29-98  
MANAGER, DESIGN DIVISION

*Pawan K. Khaitan* 5/1/98  
MANAGER, CONSTRUCTION DIVISION

*David Hancock* 5/1/98  
CITY ENGINEER

DROP MANHOLES  
MANHOLE INVERTS

AUTOCAD DRAWING - STD\_MH-9.DWG April 28, 1998  
REVISIONS: