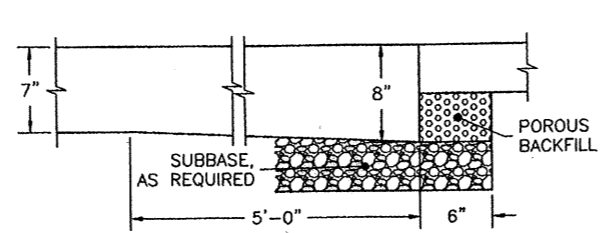
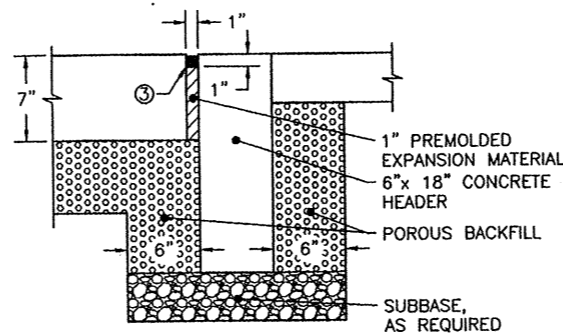


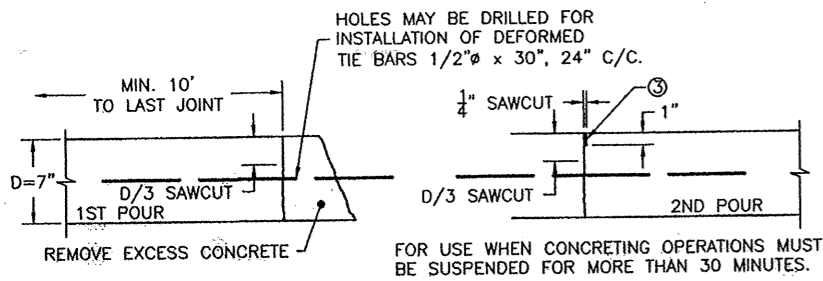
TRANSVERSE EXPANSION JOINT - TYPE E



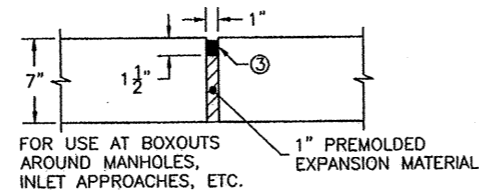
DETAILS FOR PAVEMENT ENDS



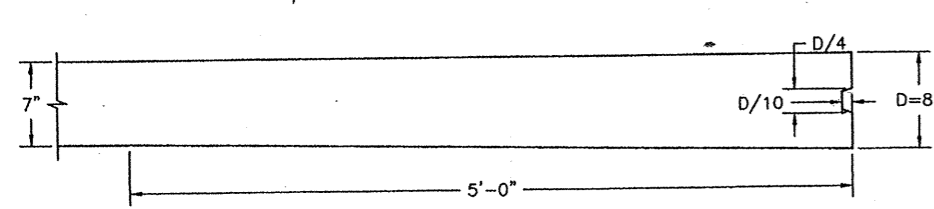
DETAILS FOR PAVEMENT ENDS



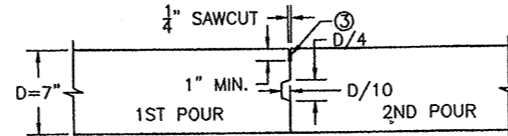
TRANSVERSE EMERGENCY CONSTRUCTION JOINT - TYPE EC



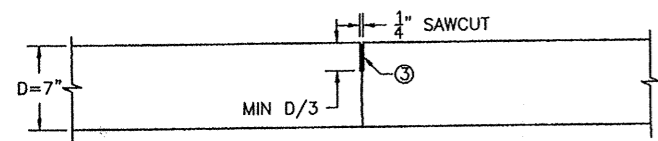
ISOLATION JOINT - TYPE I



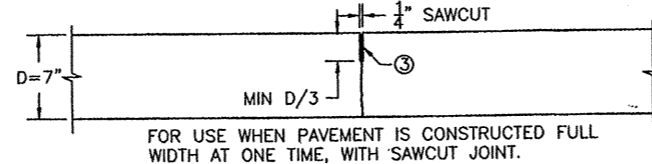
TRANSVERSE STANDARD CONSTRUCTION JOINT - TYPE SC



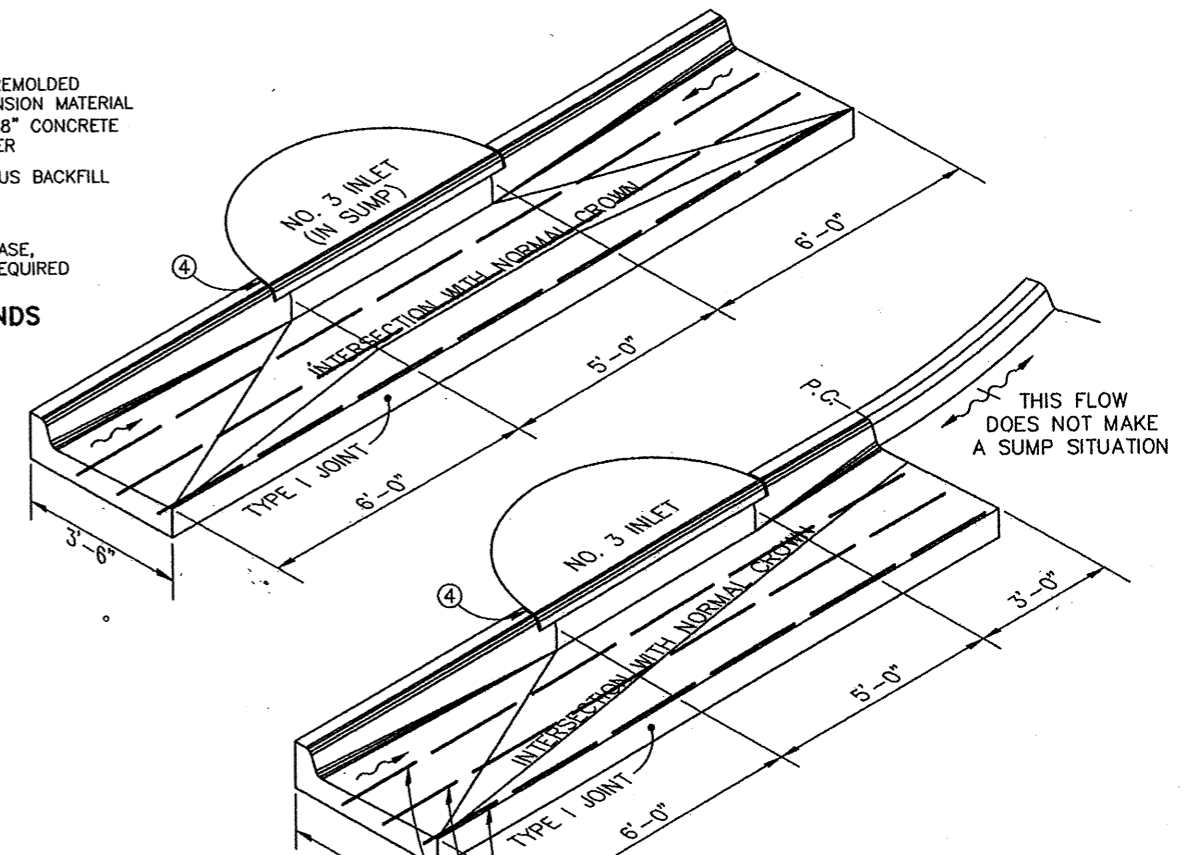
LONGITUDINAL KEYWAY JOINT - TYPE K



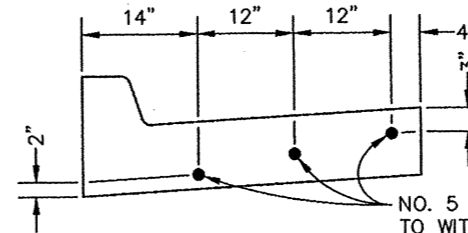
TRANSVERSE CONSTRUCTION JOINT - TYPE T



LONGITUDINAL CONTRACTION JOINT - TYPE L

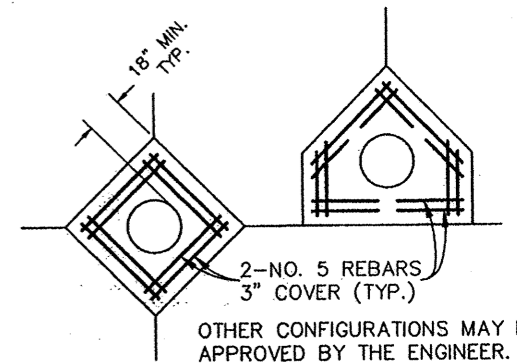


TYPICAL INLET APPROACH



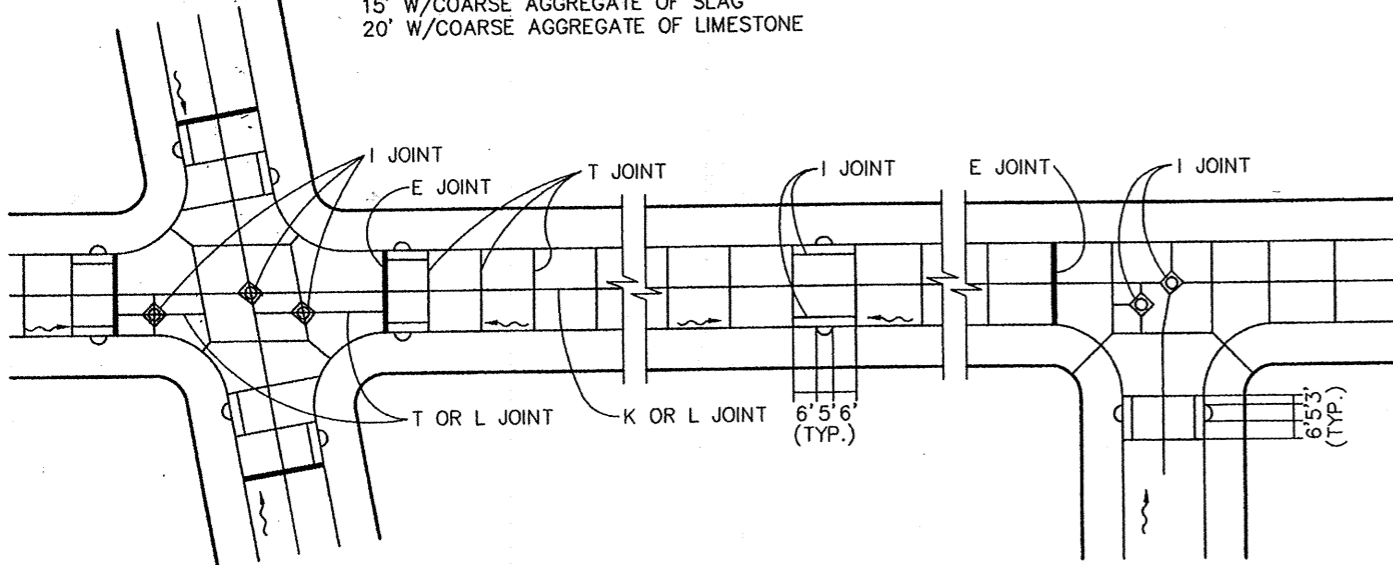
TYPICAL SECTION OF INLET APPROACH

NO. 5 REBARS EXTENDING TO WITHIN 6" OF END OF SLAB, OR AS DIRECTED BY THE ENGINEER.



TYPICAL BOXOUTS FOR MANHOLES

SPACING FOR TRANSVERSE JOINTS:
15' W/COARSE AGGREGATE OF SLAG
20' W/COARSE AGGREGATE OF LIMESTONE



END OF PAVEMENT:

- (1A) IF THE NEW PAVEMENT TERMINATES AGAINST AN EXISTING RIGID PAVEMENT OR STRUCTURE, PROVIDE FOR A TYPE E JOINT.
- (1B) IF THE NEW PAVEMENT TERMINATES AT AN UNPAVED ROADWAY, INSTALL A CONCRETE HEADER OR THICKEN THE END, AS DESIGNATED BY THE ENGINEER.
- (1C) IF THE NEW PAVEMENT CONSTRUCTION IS BEING STOPPED TEMPORARILY, BUT WILL RESUME UNDER THE SAME CONTRACT, PROVIDE FOR A TYPE SC JOINT.
- (2) ALL FORMED EDGES SHALL HAVE A 1/4" RADIUS FINISH.
- (3) FILL WITH JOINT SEALER-TO BE SLIGHTLY DEPRESSED BELOW CONCRETE SURFACE.
- (4) DO NOT FILL WITH MORTAR-PROVIDE 1/2" PREMOLDED EXPANSION MATERIAL.
- (5) ALL CONCRETE SHALL BE CLASS "C".

PRIOR TO ANY CONSTRUCTION, THE CONTRACTOR SHALL PRESENT A DRAWING SHOWING ALL JOINT TYPES AND SPACINGS, WITH CONCERN TO INLET AND MANHOLE LOCATIONS, TO BE APPROVED BY THE ENGINEER.

DO NOT SCALE - USE DIMENSIONS ONLY

<p>CITY OF AKRON BUREAU OF ENGINEERING</p>	<p>CONSTRUCTION STANDARD DWG. No. BP-3</p>
<p><i>David J. Jelic</i> 9-25-97 MANAGER, DESIGN DIVISION</p> <p><i>Pawan K. Khaitan</i> 9-25-97 MANAGER, CONSTRUCTION DIVISION</p> <p><i>David Humphreys</i> 9/25/97 CITY ENGINEER</p>	<p>PLAIN CONCRETE PAVEMENT</p> <p>AUTOCAD DRAWING - STD_BP-3.DWG REVISIONS:</p> <p>September 23, 1997</p>